

## The versatile cutter designed for safety and accuracy

Keencut's Sabre Series 2 is an out of the box ready to use solution for medium-volume cutting. It's perfect for the print shop, workshop, studio, architects' practice, or educational institutions. The Sabre combines Keencut safety with versatile general-purpose cutting; it does not need to be fixed to a dedicated bench, and there is no set-up.

The Sabre provides a straight square cut of materials from 13mm (1/2") thick foamboard to delicate tissue paper. Floating, self-adjusting hinges automatically adapt for stable lay-flat cutting and offer the opportunity to cut wider sheet materials.

Space-saving and fully mobile, the Sabre can be mounted on an optional stand and fitted with a waste catcher and roll feed. The safety features make it ideally suited for use by inexperienced operators in any environment.



## Materials cut

### Semi-rigid materials

PVC foamboard  $\leq 13\text{mm}$  (1/2")  
Corrugated / fluted plastic e.g Correx  $\leq 13\text{mm}$  (1/2")  
Corrugated cardboard  $\leq 13\text{mm}$  (1/2")  
Foam centred board  $\leq 13\text{mm}$  (1/2")

### Rigid materials (scoring only)

Cast acrylic / Plexiglas  $\leq 3\text{mm}$  (3/32")

### Flexible materials

Banners  
Magnetic sheet  
Film  
Self-adhesive vinyl  
Textiles and delicate materials



- Space saving fully mobile general purpose cutting solution
- Cuts materials up to 13mm (1/2") thick and 3m (120") wide
  - Guaranteed 1.0mm (0.04") accuracy
  - No need for calibration
  - Stable cutting platform

- Single tool head with three holders for different cutting blades
  - Automatic blade retraction
- Cuts a range of materials, including cold cutting textiles
  - Scores for snapping acrylics
- Stand, waste catcher and roll feed options

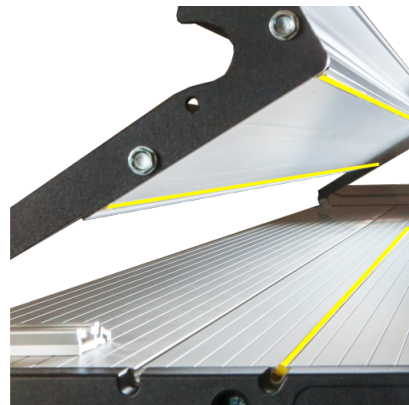


## Versatile

The Sabre Series 2 will safely cut a wide range of materials, up to 13mm (1/2") thick and 3m (120") wide. It is a fully mobile cutting solution with no need for calibration when installed. Its strong base will compensate for a substandard work surface to provide a stable cutting platform and it will sit directly on a bench or can be mounted on an optional stand that has the capacity to be fitted with a waste catcher and roll feed to become the perfect production cutter.

## Secure and accurate

The Sabre Series 2 has guaranteed 1.0mm (0.04") accuracy. Full-length silicone grip strips in the base and underside of the cutter bar hold your cutting media firmly in place. The integral base plate has metric parallel indents and a cut groove to assure accuracy. Floating, self-adjusting hinges automatically adjust to give lay-flat cutting on materials up to 13mm (1/2") thick and holds the slideway above the work-surface for easy repositioning of the media.



## Safety by design

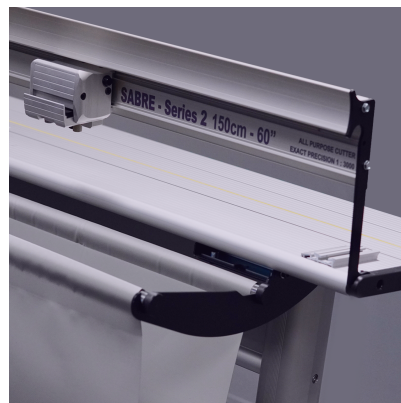


The Sabre Series 2 is designed to provide maximum operator safety for all users in a wide range of environments such as commercial offices, industrial workshops or craft studios. It provides a controlled and measured method of cutting for a wide range of materials, removing all the dangers of using a hand knife. The Sabre securely clamps the media, and the blade is always under control. The automatic blade retraction and safely contained blades also protect the user when placing material on the cutter.



## Simple to use

The Sabre Series 2 is simple to operate, requiring little training. The ergonomically designed cutting head allows single-handed cutting action and uses downward pressure to engage the blade. The single tool head offers a choice of three blade holders which can be switched safely and quickly to suit different materials. Blade changing and depth adjustment are simple and completed without the use of additional tools.



## Perfect for the educational environment

The level of safety and simplicity of use makes the Sabre Series 2 perfectly suited for use by inexperienced operators in educational environments.

## Multiple heads for maximum flexibility and performance

The Sabre Series 2 has three blades as standard:

**Graphik blade holder:** designed for the sign maker and digital printer with a specially crafted knife edge for extra stability in tougher materials and a cutting depth of up to 13mm (1/2"). By running the blade backwards, acrylics can be scored for snapping. The reversible blades have the ability to be set to cut left-right or right-left.

**Rotary blade holder:** cold cuts textiles and other delicate materials and is ideal for trimming thin strips off banners and posters where a knife blade would be too aggressive. It is fitted with a red safety blade guard to be engaged when not in use. A cutting mat is required to be used when using the rotary blade holder, please note this is not supplied.

**Medium duty blade holder:** uses standard off-the-shelf medium duty utility blades for general purpose, economical cutting and can be adjusted to cut materials up to a depth of 10mm (3/8").



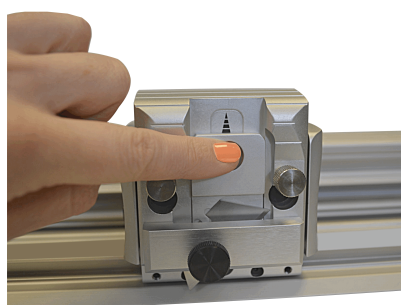


## Minimal maintenance

The slide system is designed for operator adjustment and minimal maintenance and the Sabre Series 2 is calibrated for immediate 'out of the box' accuracy.

## Five year guarantee

By manufacturing in-house, with only the highest quality materials, Keencut can guarantee that the Sabre Series 2 will provide reliable long-lasting and accurate service. All Keencut products are offered with a comprehensive five year guarantee. [Register your product to activate your guarantee >](#)



## In the box

- 100 medium duty utility blades
- 10 Graphik blades
- 1 Graphik blade holder (fitted)
- 1 rotary blade holder
- 1 medium duty blade holder

## Dimensions





	SAB100	SAB150	SAB200	SAB250	SAB300
 Cut Length cm (")	100 (40)	150 (60)	200 (80)	250 (100)	300 (120)
A cm (")	118 (46.5)	168 (66)	218 (85.75)	268 (105.5)	318 (125)
B cm (")	33 (13)	33 (13)	33 (13)	33 (13)	33 (13)
Packed Weight KG (lbs)	20 (44)	27 (59.5)	34 (75)	41 (90)	48 (106)
Packed Dimensions cm (")	126x40x15 (50x16x6)	176x40x15 (69x16x6)	226x40x15 (89x16x6)	276x40x15 (109x16x6)	326x40x15 (128x16x6)

